



Outline3D

Services and Solutions

(Overview)

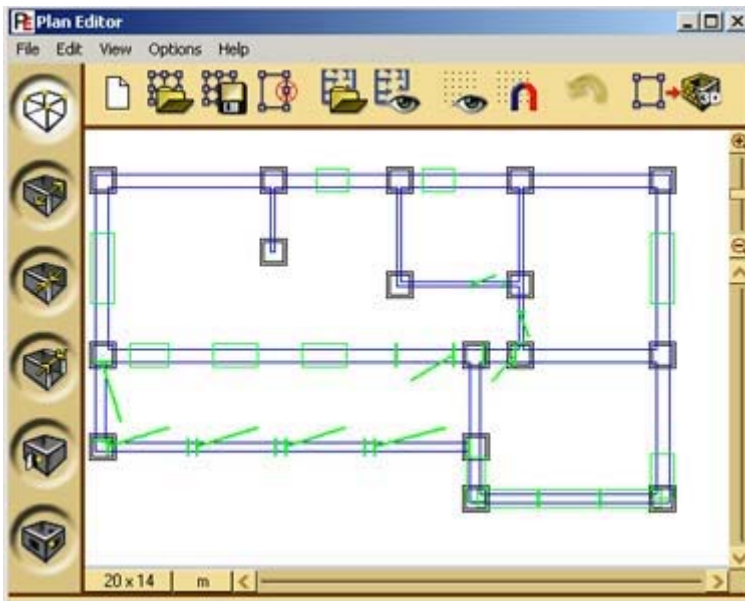
Contents

| | |
|--|---|
| 1. Basic functionality of Outline3D | 3 |
| 2. Online services for professional users (ASP model) | 4 |
| 2.1 Create your own product catalog in Outline3D | 4 |
| 2.2 Customize the user interface | 4 |
| 2.3 Create an online gallery of demo interiors | 5 |
| 2.4 Get an advanced specification of the 3D interiors. | 5 |
| 2.5 Saving 3D interiors created by Outline3D on a local PC | 5 |
| 2.6 Using the Photo function for making screenshots | 5 |
| 2.7 Editing materials | 5 |
| 2.8 Pricing | 6 |
| 2.9 Subscription procedure | 6 |
| 3. Intranet version | 7 |
| 4. Offline version | 7 |
| 5. Internet Solutions: Online showrooms | 7 |
| 6. Reselling Outline3D services and solutions | 8 |
| 7. Available API modules | 8 |
| 7.1 API for the localization of Outline3D | 8 |
| 7.2 API for the customization of the design | 8 |
| 7.3 API for the Outline3D database | 8 |
| 8. Creation of 3D furniture catalogs on demand | 8 |
| 9. Company information | 9 |
| 10. Contact information | 9 |

OUTLINE 3D

1. Basic functionality of Outline3D

The basic functionality of Outline3D is **free of charge** and includes the following:



- Draw any kind of 2D interior using the Plan Editor or select from the existing interiors available in the Outline3D catalogs. The 3D model is generated from the 2D interior by a mouse click.

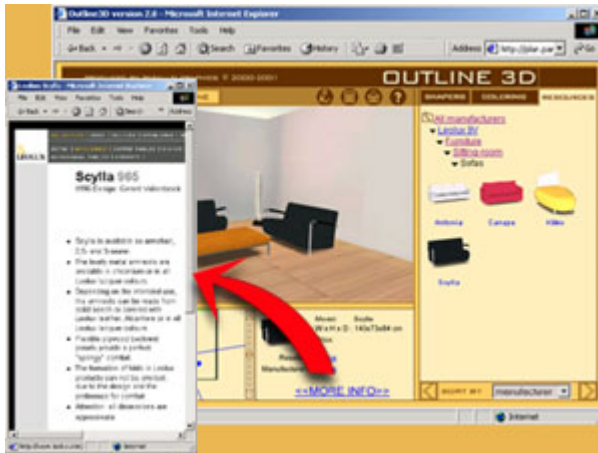


- Design the 3D interior of your choice using a comprehensive database of furniture, finishings and fittings.
- Get the specification for an interior.
- Save the finished interior in the public or private areas of the Outline3D site for future editing.

2. Online services for professional users (ASP model)

Outline3D offers advanced online services for professional users. These services include the following facilities:

2.1 Create your own product catalog in Outline3D



You can create your own product catalog in Outline3D. When Outline3D application is loaded in the parent window of your Web site (as an iframe), the visitors of your Web site will see only your product catalog.

Outline3d allows you to edit the tree of your catalog and add detailed product information:

- 3D (VRML) models of furniture and accessories.
- 2D images for wallpaper and coverings.
- General data such as dimensions, price, etc.
- Links to further product details available at your own Web site or catalog.

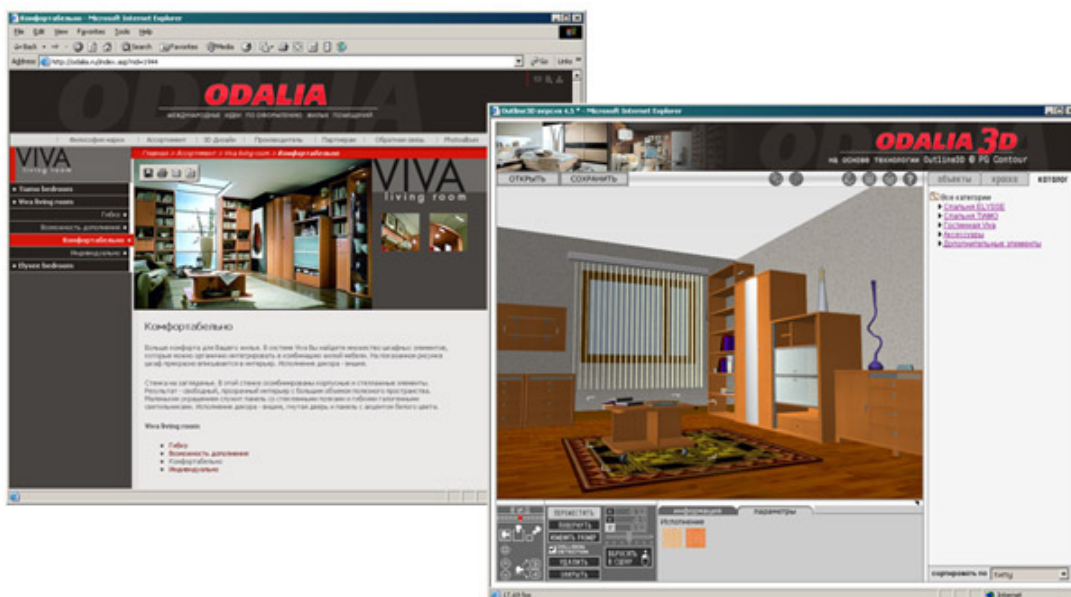
2.2 Customize the user interface

Localization of the user interface

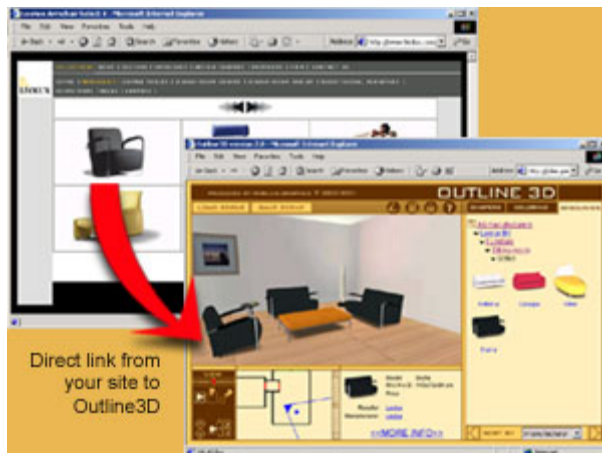
Outline3D is easily tailored for the local market. All titles, tool tips and Outline3D system messages are stored outside of the application and can be easily translated into any language by using corresponding Web interface.

Customization of the design

Outline3D provides effective means for the customization of the design (look and feel). All graphical elements used in Outline3D (buttons, colors, etc) are stored outside of the application and can be easily replaced by using corresponding Web interface.



2.3 Create an online gallery of demo interiors

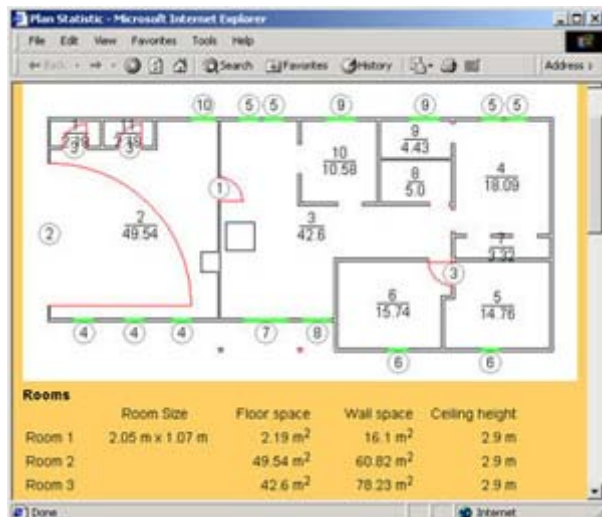


You can publish created interiors in the professional directory at the Outline3D server and place direct links to them from your own Web site. By clicking on a direct link, Outline3D starts and the highlighted interior is loaded as a default.

You can select one of these directories:

- Interior showcase
- Real Estate directory
- Design library.

2.4 Get an advanced specification of the 3D interiors.



In addition to the ability to print a detailed list of the furniture and finishings used in the interior (which is free), professional registration allows you to print a detailed 2D plan of the interior that includes the following information:

- The positions of the doors and windows.
- The floor and wall areas of the rooms.
- The ceiling height.
- The contours of 3D objects added to the scene.

2.5 Saving 3D interiors created by Outline3D on a local PC

The professional Outline3D option allows you to save created interiors on a local PC in VRML97 and Outline3D formats. This will allow you to:

- publish VRML scenes on your Web site, they can then be viewed using any standard VRML browser
- deliver them to your clients via an Intranet or e-mail
- integrate them into your own 3D/VRML projects.

2.6 Using the Photo function for making screenshots

You can create the screenshots of your interiors with a mouse click. With the help of the Photo button you can get the 2D image of your interior in the *.BMP format.

2.7 Editing materials

You can edit materials (textures and colors) on the different surfaces of 3D interiors such as walls, floors, ceilings, shaper objects and furniture items. The textures can be scaled, rotated or self-illuminated. You can also copy the colors using the Eyedropper function.

2.8 Pricing

These services are different for the various categories of users. You can use one of the standard packages or create your own package from available services:

Standard packages

| Services | Standard packages | | |
|---|---------------------|-------------------|----------------|
| | Furniture suppliers | Real estate firms | Design studios |
| Create your own product catalog | ✓ | | |
| Customize the user interface (design, language) | ✓ | ✓ | ✓ |
| Create an online gallery of demo interiors | ✓ | ✓ | ✓ |
| Edit materials | ✓ | ✓ | ✓ |
| Get an advanced interior specification | ✓ | ✓ | ✓ |
| Use the Photo function for creating screenshots | ✓ | ✓ | ✓ |
| Save 3D scenes on a local PC and export to VRML | ✓ | ✓ | ✓ |

| Packages | Annual fee, EUR* |
|---------------------|------------------|
| Furniture suppliers | 1999.00 |
| Real estate firms | 1499.00 |
| Design studios | 1499.00 |

2.9 Subscription procedure

You can evaluate the online professional services of Outline3D during the 30-day trial period. A professional registration form is available at http://www.outline3d.com/main/prof_reg.php?ver=eng. After registration you will be provided with detailed technical documentation in a PDF format. When the evaluation period is over you will have to pay a subscription fee as specified above.

3. Intranet version

The Outline3D application can be installed within a company Intranet. This allows you to offer the service to a network of sales terminals, where sales assistants can demonstrate goods and services to potential clients using an up-to-date database stored on the main server.

We offer this solution with the following services:

- a) The installation and configuration of the Outline3D server (**3000 EUR**)
- b) The license fee (**9000 EUR**) includes:
 - One (1) installation of the Outline3D server
 - Up to 100 installations of the Outline3D client software (Cortona ® VRML Client and Plan Editor)
 - Ability to customize the design (look and feel) of Outline3D and translate Outline3D into other languages using the API and documentation provided by ParallelGraphics
 - Technical support for the first year

4. Offline version

Offline version with standard product catalog

The offline version of Outline3D is targeted at standalone PCs/laptops. It allows you to demonstrate the products to potential clients and create interior designs without the necessity of the Internet connection.

The offline version has some specific features in comparison with the Outline3D client-server solutions:

- Created 3D interiors can be saved only on a local PC in the Outline3D or VRML format. Then you can publish VRML files on your Web site or send via e-mail.
- You cannot add new items to Outline3D product catalog. Nevertheless, you can use your own objects to create 3D interiors - you can drag&drop them from the local PC into a 3D scene.

The price of the offline version is the following:

| | |
|-----------------|-------------------|
| Regular price: | 279.95 USD |
| Academic price: | 139.95 USD |

The trial version can be downloaded at <http://www.outline3d.com>

Offline version with custom product catalog

Offline version with custom product catalog can be developed on demand. For pricing details, please contact us at sales@outline3D.com

5. Internet Solutions: Online showrooms

The Outline3D solution can also be hosted on the company Web server. That will allow you to organize your own online showroom to demonstrate your products to remote clients.

We offer this option with the following services:

- a) The installation and configuration of the Outline3D server (**3000 EUR**).
- b) The license (**16000 EUR**) fee includes:
 - One (1) installation of the Outline3D server
 - An unlimited redistribution license for the client-side software (Cortona VRML Client and Plan Editor)
 - An unlimited redistribution license for the basic Outline3D services specified in the section #1 (see above). The basic services are supposed to be free for the end-users
 - Ability to customize the design (look and feel) of Outline3D and translate Outline3D into other languages using the API and documentation provided by ParallelGraphics
 - Technical support for the first year

6. Reselling Outline3D services and solutions

Currently the following Outline3D solutions are offered:

- Online ASP Services hosted at www.outline3d.com (see section #2 for more details)
- Outline3D Intranet Solutions (see section #3)
- Offline version of Outline3D (see section #4)
- Outline3D Showrooms (see section #5)

You can resell these options as is, or customize them for your clients.

Currently the customization may include:

- Localization of Outline3D using the API provided by ParallelGraphics.
- Customization of the design (look and feel) using the API provided by ParallelGraphics.
- Modification of the structure (tree) of the Outline3D product catalog using the interface provided by ParallelGraphics.
- Integration of the Outline3D object database with the customers' databases using the interface provided by ParallelGraphics.

Other services:

- 3D modeling on demand.

For further information, please, contact us at sales@parallelgraphics.com

7. Available API modules

Currently the following API modules are available:

7.1 API for the localization of Outline3D

Outline3D is easily tailored for the local market. All titles, tool tips and Outline3D system messages are stored outside of the application and can be easily translated into any language without the necessity of reassembling the application.

7.2 API for the customization of the design

Outline3D provides effective means for the customization of the design (look and feel). All graphical elements used in Outline3D (buttons, colors, etc) are stored outside of the application and can be easily replaced without having to reassemble Outline3D.

7.3 API for the Outline3D database

Outline3D now contains:

- The user interface that allows you to upload the objects to the Outline3D product catalog.
- The administrative interface that allows you to customize the structure of the product catalog. It allows you to add, rename, and remove sections from the catalog tree.

For more detailed information, please contact us at sales@outline3d.com

8. Creation of 3D furniture catalogs on demand

PG's experts can create 3D/VRML catalogs of furniture, accessories, lighting and other products on request. To get more information about pricing and ordering, please contact your local ParallelGraphics representative.

ParallelGraphics also offers a range of 3D/VRML authoring tools that allows you to:

- Re-use existing CAD models by converting them into the VRML97 format and reducing their size with the help of Internet Model Optimizer from ParallelGraphics.
- Create the 3D models from scratch with the help of Internet Space Builder and Internet Scene Assembler.

You can download trial versions of this software by visiting the ParallelGraphics Web site at <http://www.parallelgraphics.com/products/>

9. Company information

Outline3D is a ParallelGraphics project.

ParallelGraphics is a world leader in the provision of Web3D graphics solutions with a proven track record of innovation and development over the last decade. The company's technologies and tools have been used widely in providing online training solutions, remote user support, virtual manuals for technical maintenance, and interactive applications for design and modeling. The Company's list of clients includes Boeing, NASA, Airbus, ESA. ParallelGraphics is headquartered in Dublin, Ireland, and its R&D center is located in Moscow, Russia.

Additional information about the company and its latest products and solutions can be found at www.parallelgraphics.com.

10. Contact information

If you have any questions please contact us at ***sales@outline3d.com*** or directly at the following offices:

Dublin office (Headquarters)

Address: 6 Wilton Place Dublin 2 Ireland

Phone: +353 1 6628940

Fax: +353 1 6628941

Moscow office

Address: 47 Nakhimovsky pr., 19th floor, Moscow, 117418, Russia

Phone: +7 (095) 129 1500

Fax: +7 (095) 129 0911